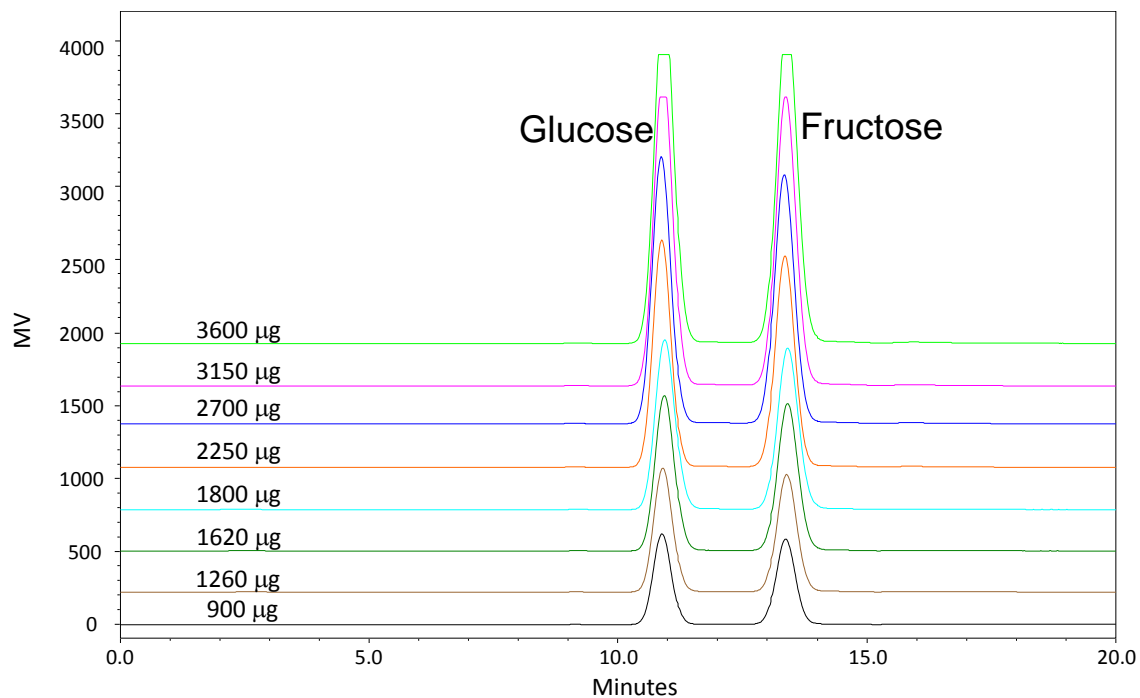




## Loading Capacity Test of Carbomix<sup>®</sup>-Ca NP10:8% (10 $\mu$ m, 8%, 7.8x300 mm) With Glucose and Fructose



Column: Carbomix<sup>®</sup> Ca-NP10:8% (7.8x300 mm)  
Mobile Phase: H<sub>2</sub>O  
Flow Rate: 0.6 mL/min  
Temperature: 85 °C  
Detection: RI  
Injection amount: 0.9, 1.26, 1.62, 1.8, 2.25, 2.7, 3.15 and 3.6 mg each  
Samples: Glucose and Fructose

Keyword: Carbomix, Carbomix Ca-NP10:8%, capacity, carbohydrate, glucose, fructose